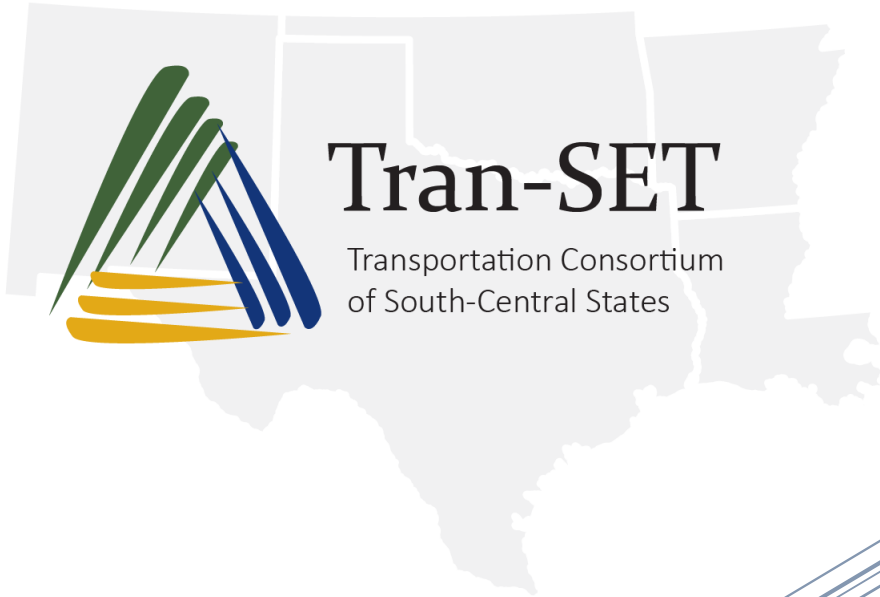


Performance Indicators



Tran-SET

Transportation Consortium
of South-Central States

Year 1

October 30, 2017

Part I – Program-Wide Performance IndicatorsUTC Name: Transportation Consortium of South-Central States (Tran-SET)University: Louisiana State UniversityGrant #: 69A3551747106

Reporting Period: 11/30/2016 – 10/30/2017

Performance Metrics	TOTAL	LSU	UTA	UTSA	TAMU	UNM	NMSU	PVAMU	A-STATE	OSU	NTU	BRCC
Number of transportation-related courses offered during the reporting period that were taught by faculty and/or teaching assistants associated with project												
Undergraduate courses	25	11	3	1	1	2	0	1	3	3	0	0
Graduate courses	25	5	2	1	1	3	0	3	7	3	0	0
Number of students participating in the research project during the reporting period												
Undergraduate students in research	42	21	2	3	5	4	0	5	1	1	0	0
Graduate students in research	59	15	4	5	8	9	0	6	7	5	0	0
Number of transportation-related advanced degree programs that utilized grant funds during the reporting period to support graduate students												
Masters level programs	13	3	1	3	0	1	0	1	3	1	0	0
Doctoral level programs	9	2	1	1	1	1	0	1	2	0	0	0
Number of students supported by this project during the reporting period												
Undergraduate students in research	33	13	2	3	5	3	0	5	1	1	0	0
Masters students	28	7	3	3	1	5	0	2	2	5	0	0
Doctoral students	28	7	1	2	7	5	0	4	2	0	0	0

Performance Metrics	TOTAL	LSU	UTA	UTSA	TAMU	UNM	NMSU	PVAMU	A-STATE	OSU	NTU	BRCC
Number of students supported by this grant who received degrees during the reporting period												
Undergraduate degrees	0	0	0	0	0	0	0	0	0	0	0	0
Masters degrees	2	0	0	0	0	0	0	0	0	2	0	0
Doctoral degrees	2	2	0	0	0	0	0	0	0	0	0	0
Number of total dollar value of research projects selected for funding during the reporting period using UTC grant funds (Federal and/or Recipient Share) that you consider to be applied research and advanced research.												
Number of applied research projects	35	9	2	5	3	5	1	4	2	3	1	0
Dollar value of applied research projects	\$3,307,987	\$858,152	\$232,000	\$548,000	\$150,000	\$541,896	\$24,500	\$423,844	\$230,000	\$279,595	\$20,000	\$0
Number of advanced research projects	9	4	0	0	3	0	0	1	1	0	0	0
Dollar value of advanced research projects	\$1,004,130	\$348,130	\$0	\$0	\$408,000	\$0	\$0	\$138,000	\$110,000	\$0	\$0	\$0

Part II – UTC Specific Performance Indicators

UTC Name: Transportation Consortium of South-Central States (Tran-SET)

University: Louisiana State University

Grant #: 69A3551747106

Reporting Period: 11/30/2016 – 10/30/2017

Category	Description of Indicator	Total	LSU	UTA	UTSA	TAMU	UNM	NMSU	A-STATE	OSU	PVAMU	NTU	BRCC
Research	Number of Peer-Reviewed Publications Accepted/Published	2	0	0	0	1	0	0	1	0	0	0	0
	Number of Presentations Given/Scheduled	15	3	2	3	3	2	0	1	1	0	0	0
	Number of Conference Papers Accepted/Published	0	0	0	0	0	0	0	0	0	0	0	0
	Number of Undergraduate Students Participating/Supported by Project	42	21	4	5	5	3	2	1	1	0	0	0
	Number of Graduate Students Participating/Supported by Project	59	15	9	6	8	5	4	5	7	0	0	0
	Total Budgeted Costs for Women & Minorities	\$648,184	\$299,574	\$59,916	\$20,500	\$144,123	\$46,047	\$27,977	\$ -	\$45,550	\$4,497	\$ -	\$ -
	Number of Projects Funded in Research Focus Area 4	14											
	Number of Projects Funded in Research Focus Area 5	2											
	Number of Projects Funded in Research Focus Area 6	8											
	Number of Projects Funded in 'Other Regional Priorities'	8											
	Number of Proposals Received in this Funding Cycle	33											
	Impact of Research Results on State of Practice	TBD											
	Feedback Obtained from Industries, State Personnel, and Researchers on the Center Activities	TBD											

Category	Description of Indicator	Total	LSU	UTA	UTSA	TAMU	UNM	NMSU	A-STATE	OSU	PVAMU	NTU	BRCC
Leadership	Number of Graduate Students Participating/Supported by Project	59	15	9	6	8	5	4	5	7	0	0	0
	Number of Seminars/Workshops Presented from the Funded Projects	6	1	0	0	2	3	0	0	0	0	0	0
	Number of Webinars Presented from the Funded Projects	0	0	0	0	0	0	0	0	0	0	0	0
	Number of Peer-Reviewed Publications Accepted/Published	2	0	0	0	1	0	0	1	0	0	0	0
	Number of Presentations Given/Scheduled	15	3	2	3	3	2	0	1	1	0	0	0
	Number of Conference Papers Accepted/Published	0	0	0	0	0	0	0	0	0	0	0	0
	Number of New Projects	33											
	Number of Conferences Organized/Sponsored	2											
	Feedback Obtained from Stakeholders on the Center Activities and Impacts of Research Results on State of Practice.	TBD											
Education & Workforce Development	Number of New or Revised Courses (Traditional and Long-Distance) Delivered	3	0	0	1	1	0	0	0	1	0	0	0
	Number of Students Attending the Offered Courses	57	0	0	15	12	0	0	0	30	0	0	0
	Number of New Educational Modules Delivered	7	0	0	1	2	1	0	2	1	0	0	0
	Number of Conferences Organized/Sponsored	2											
	Number of Webinars Presented from the Funded Projects	0	0	0	0	0	0	0	0	0	0	0	0
	Number of Seminars/Workshops Presented from the Funded Projects	6	1	0	0	2	3	0	0	0	0	0	0

Category	Description of Indicator	Total	LSU	UTA	UTSA	TAMU	UNM	NMSU	A-STATE	OSU	PVAMU	NTU	BRCC
Education & Workforce Development	Number of Graduate Students Participating/Supported by Project	59	15	9	6	8	5	4	5	7	0	0	0
	Relevancy, Practicality, Usefulness of the Project (with respect to Education & Workforce Development) to Participants through Surveys	TBD											
Technology Transfer	Number of Conferences Organized/Sponsored	2											
	Number of Webinars Presented from the Funded Projects	0	0	0	0	0	0	0	0	0	0	0	0
	Number of Seminars/Workshops Presented from the Funded Projects	6	1	0	0	2	3	0	0	0	0	0	0
	Number of Peer-Reviewed Publications Accepted/Published	2	0	0	0	1	0	0	1	0	0	0	0
	Number of Presentations Given/Scheduled	15	3	2	3	3	2	0	1	1	0	0	0
	Number of Conference Papers Accepted/Published	0	0	0	0	0	0	0	0	0	0	0	0
	Number of Visitors from the Center's Website	12,624											
	Number of Visits to the Center's Website	72,615											
	Relevancy, Practicality, Usefulness of the Project (with respect to Technology Transfer) to Participants through Surveys	TBD											
Collaboration	Number of Partnerships with Public and Private Entities	22	3	0	1	1	9	1	4	2	1	0	0
	Number of External Participants in Technology Transfer and Education Activities from the Consortium Members	9	1	0	0	0	5	1	1	0	1	0	0

Category	Description of Indicator	Total	LSU	UTA	UTSA	TAMU	UNM	NMSU	A-STATE	OSU	PVAMU	NTU	BRCC
Collaboration	Number of Multi-Institution Research Projects between the 11 Institutions	11											
Diversity	Number of Research Opportunities for Graduate Students from Under-Represented Groups	22	9	2	2	4	2	2	0	1	0	0	0
	Number of Research Opportunities for Undergraduate Students from Under-Represented Groups	18	8	1	5	0	2	1	0	1	0	0	0
	Total Budgeted Costs for Women & Minorities	\$648,184	\$299,574	\$59,916	\$20,500	\$144,123	\$46,047	\$27,977	\$ -	\$45,550	\$4,497	\$ -	\$ -
	Number of funded programs that recruit and hire graduate students from minority groups in science and engineering	74	11	8	8	18	10	7	3	9	0	0	0
	Increase in the number of minority student enrollment in transportation programs	242	33	1	53	31	0	3	18	-28	133	3	-5
	Number of degrees awarded to minority students in transportation-related programs	392	43	44	126	14	23	36	58	12	18	0	18